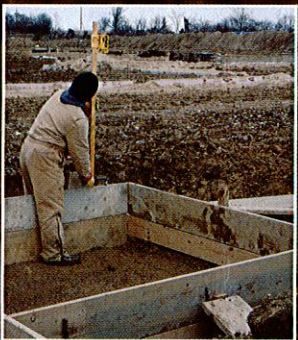


# LB-1

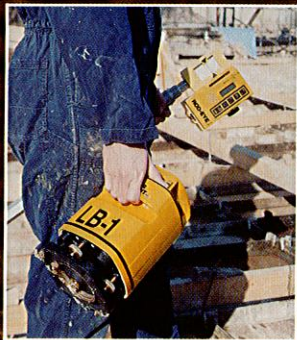
THE QUALITY LASER SYSTEM AT AN ECONOMICAL PRICE



One Man Operation



Forms & Footings



Compact & Portable



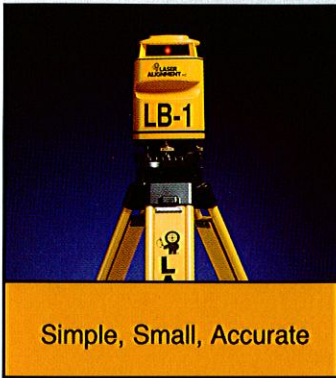
Machine Control

 **LASER  
ALIGNMENT** INC.





# LB-1 — THE PROVEN PERFORMERS



Simple, Small, Accurate

## Rugged:

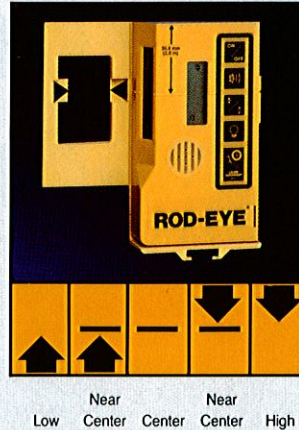
The proven ball-bearing system (over 10 years) is encased in a high-impact housing — *construction tough!*

## Waterproof:

The LB-1 and Rod Eye-4 are not only drip-proof, water resistant, weatherproof; they are completely *waterproof* and *pressurized!*

## Versatile:

The LB-1 and Rod Eye-4 are compatible with all conventional rotating laser equipment — *Not limited to its own kind!*



## Push-Button Control:

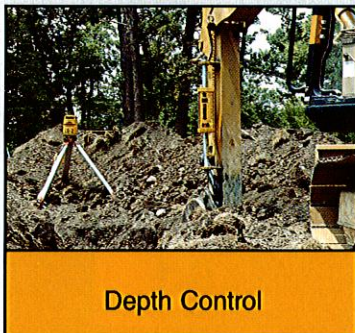
No knobs or switches to break off.

## Extended Battery Life:

Automatic shut off in 7 minutes when not activated by the LB-1.

## Two Accuracy Settings:

Narrow or wide to match your jobsite requirements (visual and audio).



Depth Control

## MODEL LB-1 MC SERIES FOR MACHINE CONTROL GUIDANCE

Precisely control excavators, dozers, graders, skip loaders or other machines simultaneously from a single LB-1 MC Laser Beacon.

The LB-1 MC and a 360° receiver system provide operators with instant cut/fill information for visual or automatic control — *cuts costs and increases profits!*



Machine Control

## SYSTEM SPECIFICATIONS

### LASER BEACON MODELS LB-1 AND LB-1 MC

**Working Radius:** From 300 to 1,000' (91 to 305m)  
(Range determined by model selected)

**Accuracy:** On 300' Radius Models

Better than  $\pm 3/32"$  (2.3mm per 30m)  $\pm 15$  arc seconds  
On Long Range Models

Better than  $\pm 1/16"$  (1.5mm per 30m)  $\pm 10$  arc seconds

**Self-Leveling Range:**  $\pm 10$  arc min.

**Power:** NI-CAD Rechargeable Batteries (unique without memory)

**Safety:** Class I Laser Product, meets all published safety requirements. (No warning signs or operator cards)

**Weight:** 12.5 lbs (5.6 kg)

**Dimensions:** 5.9" x 5.9" x 10" (150mm x 150mm x 260mm)

**Leveling Method:** Stainless steel ball-bearing pendulum

**Waterproof:** *Completely* — with positive pressure!!

### ROD EYE-4

**Two-Band Accuracy:** Narrow  $< \pm 1/16"$  (1.5mm)

Wide  $< \pm 1/8"$  (3.0mm)

**Photocell Length:**

A full 2 1/2" (63mm) pickup area; with a wide reception angle.

**Optional Remote Readout:**

Duplicates the visual readout of the Rod Eye-4, with a lighted display and a 15 foot (4.5 M) cable.

**Weight:**

14 oz (396 grams)

**Dimensions:**

6.2" H x 3.5" W x 1.6" D

(158mm x 89mm x 41mm)

**WARRANTY** - One full year (extended protection warranty available)



Serving a world of customer needs for construction and agriculture.



2850 Thornhills SE, Grand Rapids, MI 49546, USA, (616) 949-7430, 1-800-4-LASERS in USA, Fax (616) 949-6975, Telex 226420 LASERAL

Your local distributor is:

Ingenieursbureau Passe-Partout  
Nieuwe Gouwe O.Z. 11b  
2801 SB GOUDA  
Tel. 01820-38360 (38678)

Contact these application experts for a Free LB-1 jobsite demonstration and to see our full range of tripods, grade rods, and accessories.

LAI 2268  
2269 INT  
P/N 05001-1